

WELCOME TO THE RADISSON BLU HOTEL, NANTES



# WELCOME TO THE RADISSON BLU HOTEL, NANTES

---

## Former Courthouse of the city of Nantes

4 stars Hotel– 2012

- 142 room
- 1000sqm of meeting space
- A restaurant and bar "To share"





# SEMINAIRES

---



1000sqm of meeting space  
9 rooms for:  
Day or ½ day study  
Residential seminar  
Reception



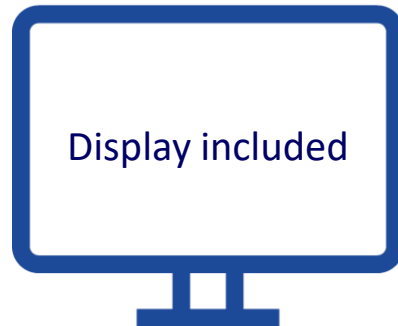
Fully equipped rooms:  
video projector, flipchart, station break,  
notepad and pencils.  
(Additional equipment on request)



OneTouch app: your event on  
the smartphone of all your  
participants.



Catering services that adapts to  
your timing and budget.

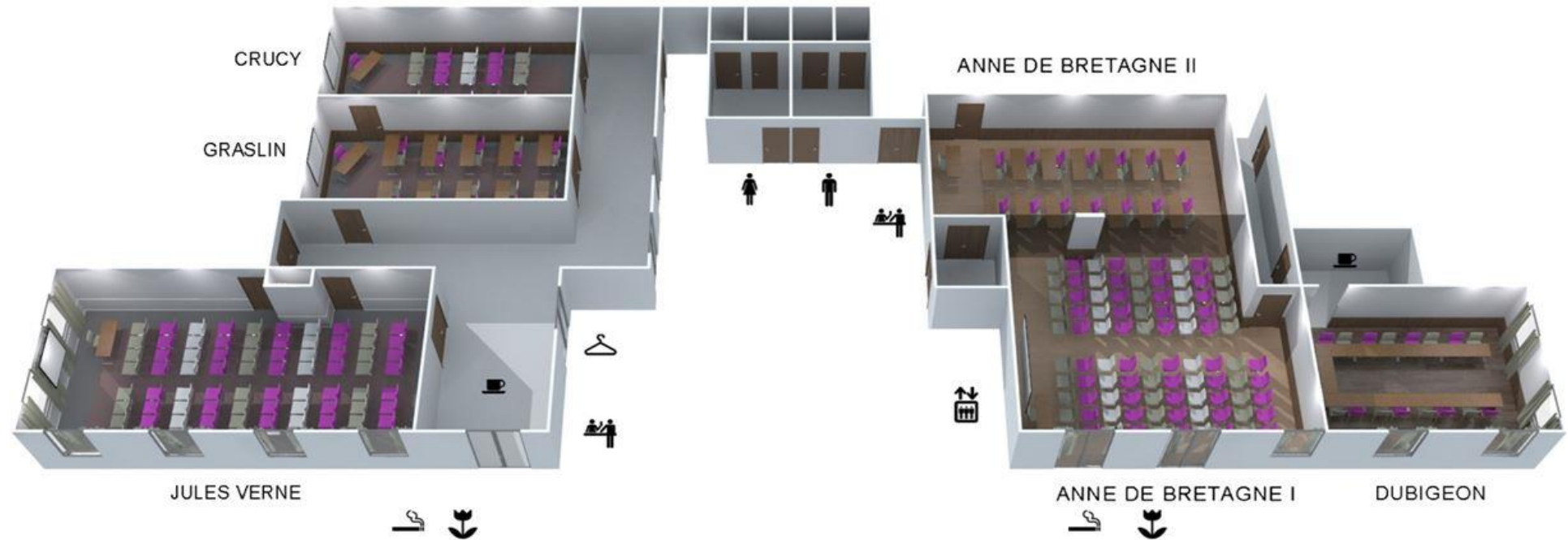


Free wifi



EFFIA public car park with 300  
spaces in front of the hotel.

# MEETING ROOMS: GROUND FLOOR



Room	Sqm	Dimension (meters)	Ceiling height	Theater	U Style	Class	Cabaret	Cocktail	Banquet	Day light
Jules Verne	76	12,40 x 6,10	2,90	80	30	48	36	50	60	Yes
Graslin	37	8,70 x 4,20	2,80	30	16	20	12	15	20	No
Crucy	37	8,70 x 4,30	2,80	30	16	20	12	15	20	No
Anne De Bretagne 1	94	9,46 x 10,23	2,70	90	26	50	42	60	70	Yes
Anne De Bretagne 2	50	11,13 x 4,39	3	35	15	25	12	15	20	No
Dubigeon	51	7,37 x 6,10	2,55	-	16 (board)	-	-	-	-	Yes

# MEETING ROOMS : ANNE DE BRETAGNE 1

---



Room	Sqm	Dimension (meters)	Ceiling height	Theater	U Style	Class	Cabaret	Cocktail	Banquet	Day light
Anne De Bretagne 1	94	9,46 x 10,23	2,70	90	26	50	42	60	70	Yes



# MEETING ROOMS : ANNE DE BRETAGNE 1



Room	Sqm	Dimension (meters)	Ceiling height	Theater	U Style	Class	Cabaret	Cocktail	Banquet	Day light
Anne De Bretagne 1	94	9,46 x 10,23	2,70	90	26	50	42	60	70	Oui

# MEETING ROOMS : ANNE DE BRETAGNE 2



Room	Sqm	Dimension (meters)	Ceiling height	Theater	U Style	Class	Cabaret	Cocktail	Banquet	Day light
Anne De Bretagne 2	50	11,13 x 4,39	3	35	15	25	12	15	20	No



# MEETING ROOMS : DUBIGEON

---

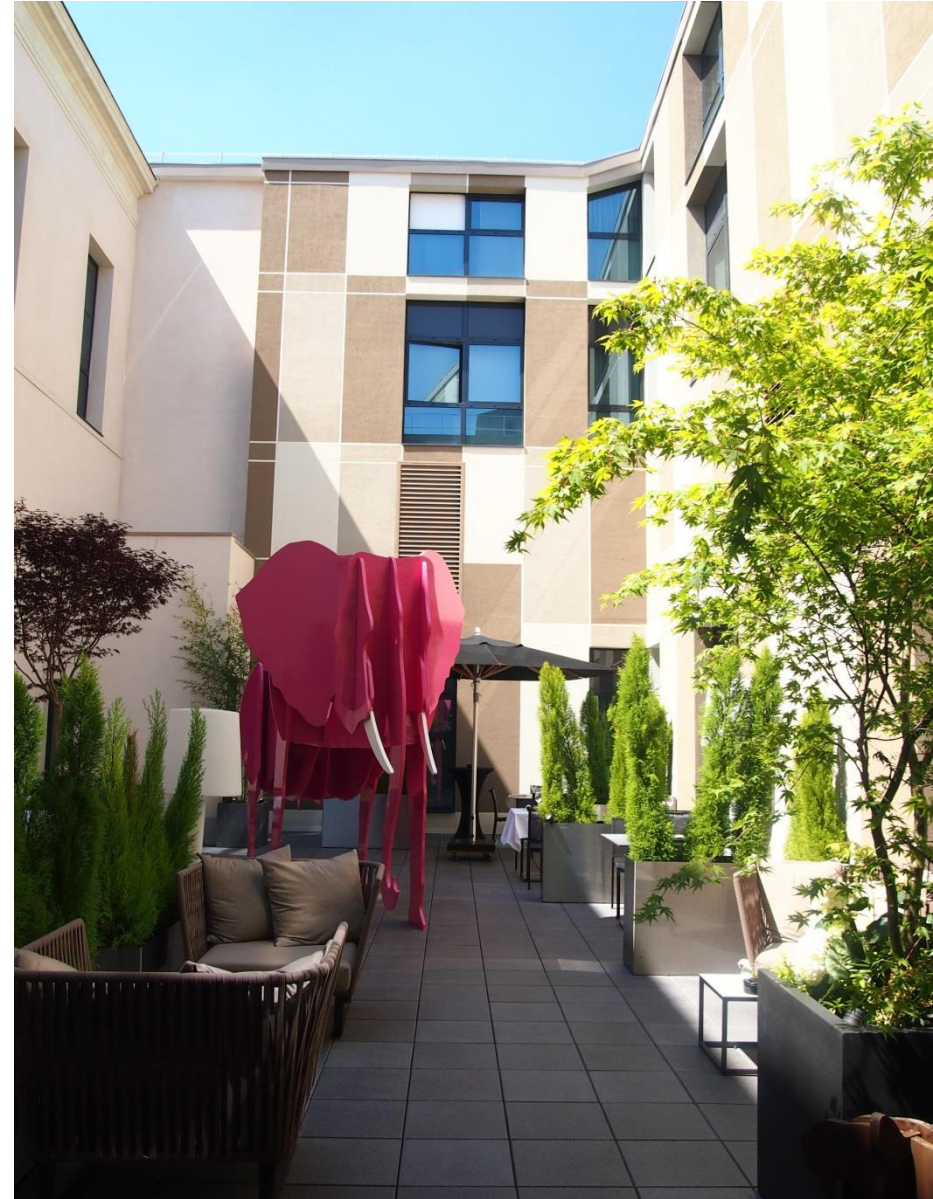


Room	Sqm	Dimension (meters)	Ceiling height	Theater	U Style	Class	Cabaret	Cocktail	Banquet	Day light
Dubigeon	51	7,37 x 6,10	2,55	-	16 (board)	-	-	-	-	Yes



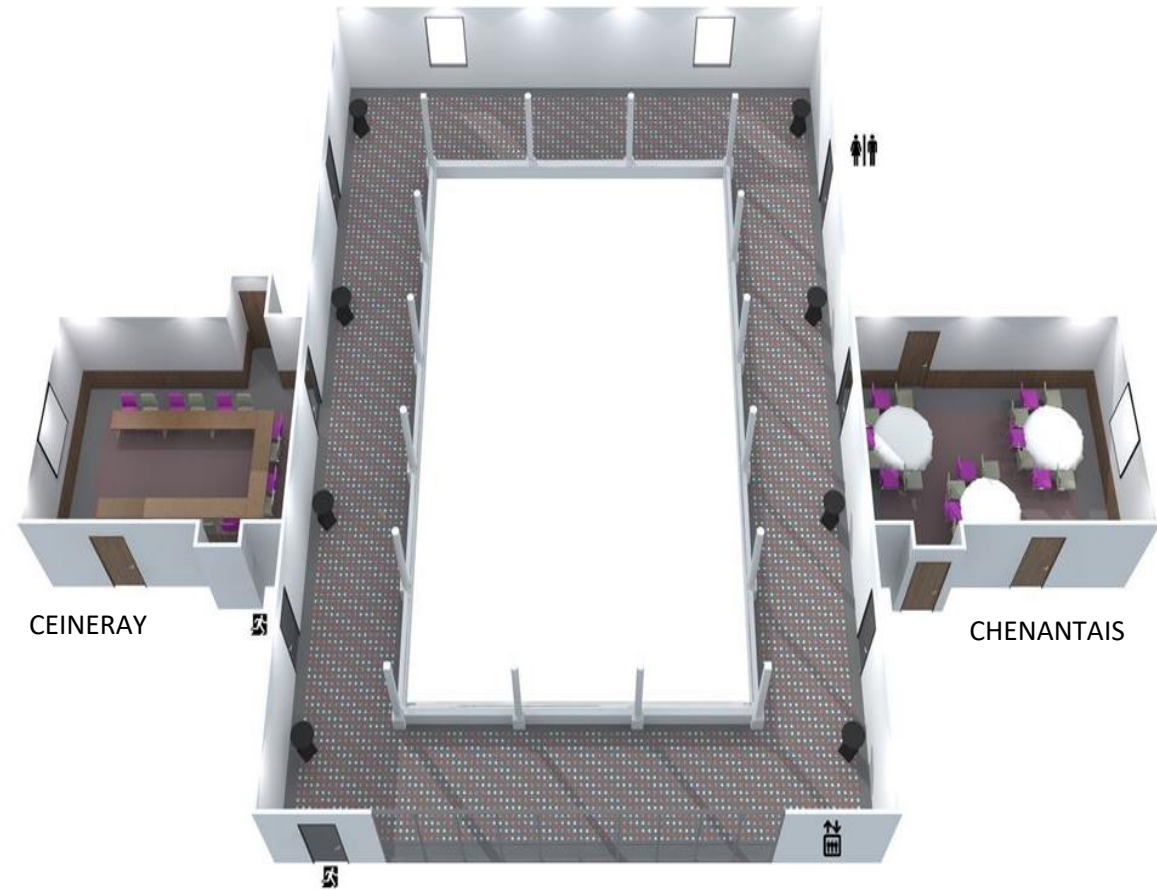
# PATIOS

---





# MEETING ROOMS : CHENANTAIS et CEINERAY



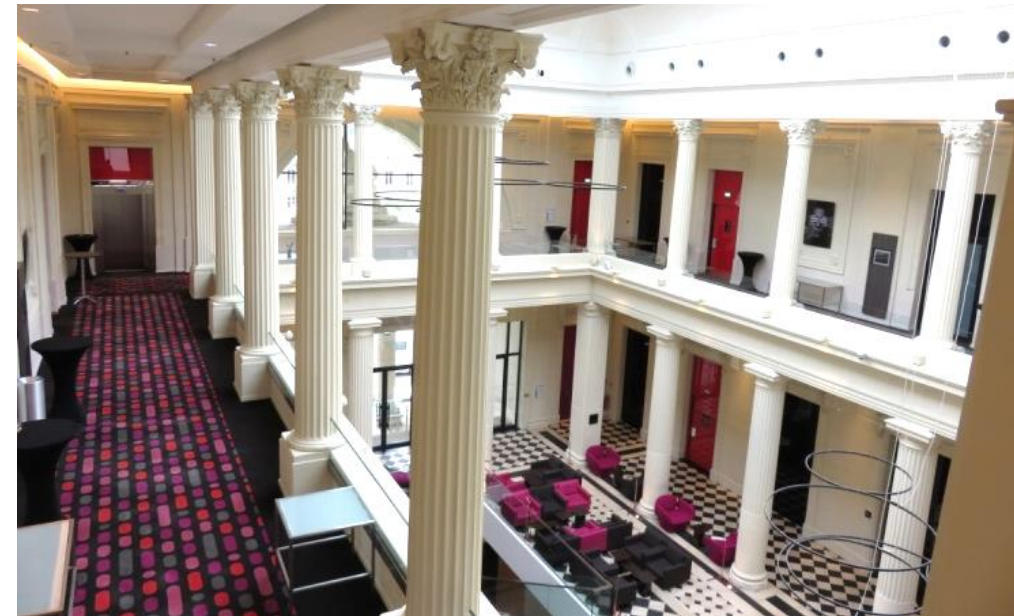
Room	Sqm	Dimension (meters)	Ceiling height	Theater	U Style	Class	Cabaret	Cocktail	Banquet	Day light
Chenantais	42	7,20 x 5,80	2,80	35	16	24	12	-	-	1/4
Ceineray	46	7,90 x 5,80	2,80	35	16	24	12	-	-	1/4



# COURSIVES

---

- 150m<sup>2</sup>, under the glass roof on the 2nd floor
- Diving view of the atrium
- Ideal for your cocktails up to 80 people





# OUR RESTORATIVE AREAS

---

Coursives



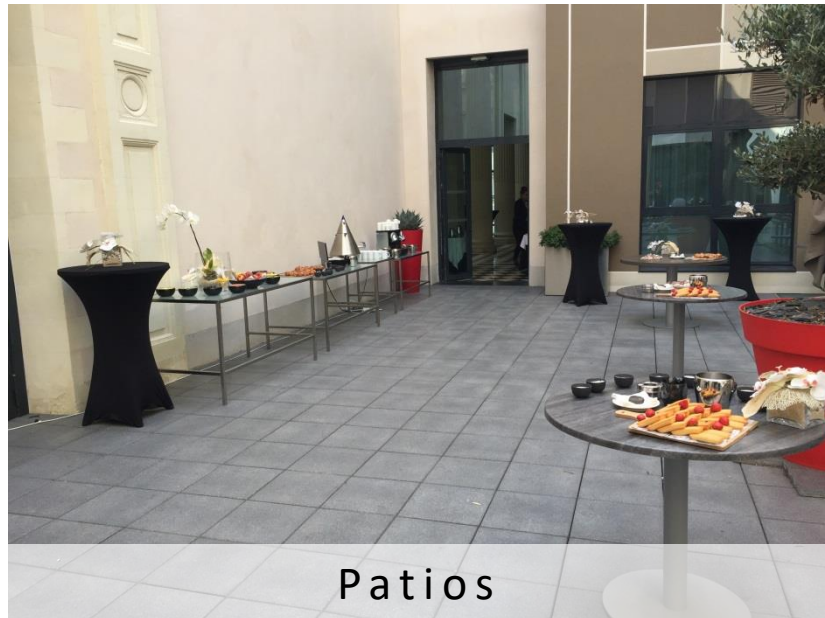
Atrium



L'Assise



Patios





# RESTAURANT AND BAR "TO SHARE"

---



- A unique concept
- In the Atrium
- For individual customers



# DINING IN THE BLACK?

---

- An innovative culinary and sensory experience
- For groups of 10 to 30 people



 **DANS LE NOIR ?**  
L'espace sensoriel

**Radisson**   
HOTEL, NANTES

Venez vivre l'expérience

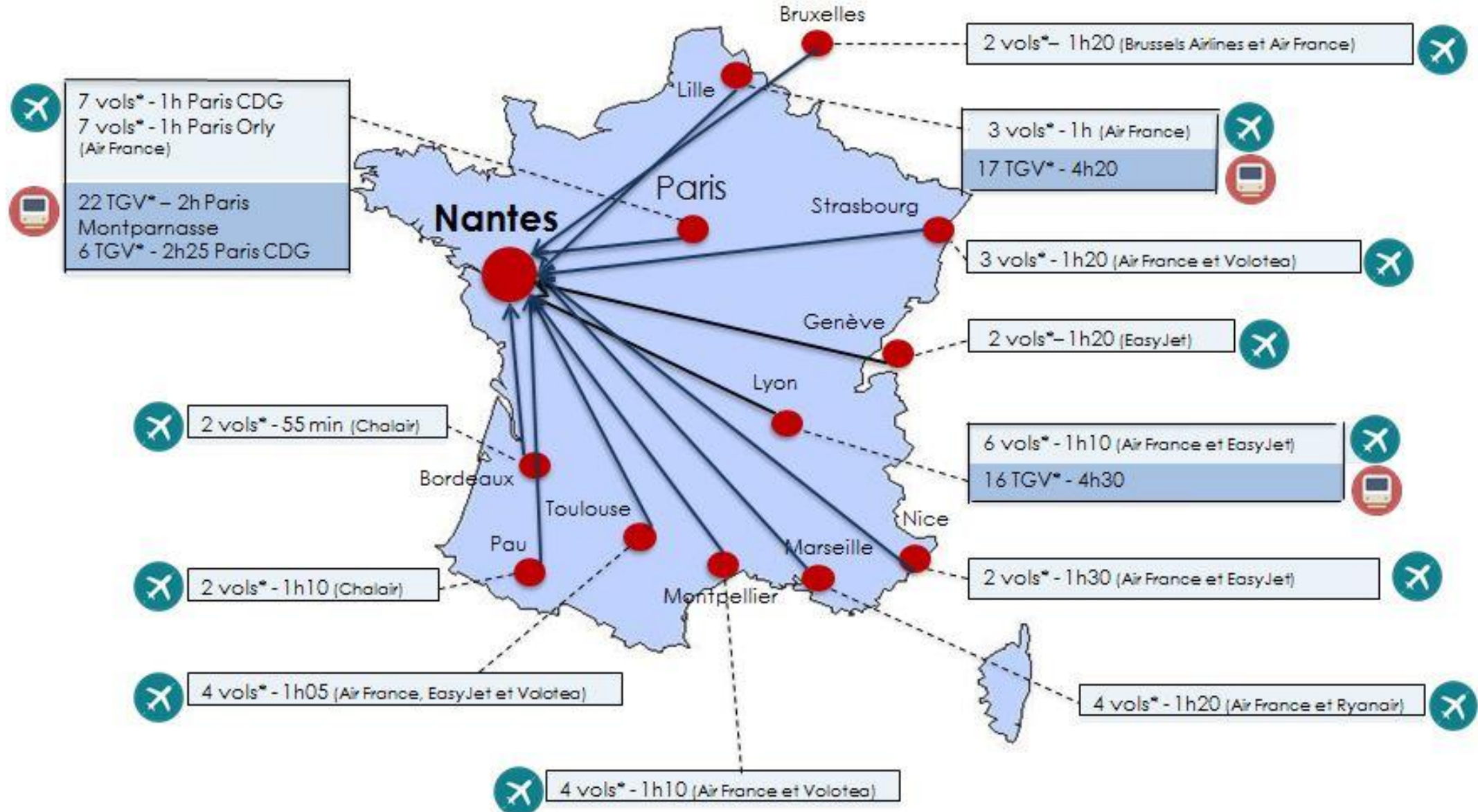
**Dans Le Noir ?**

Chaque vendredi et samedi soir



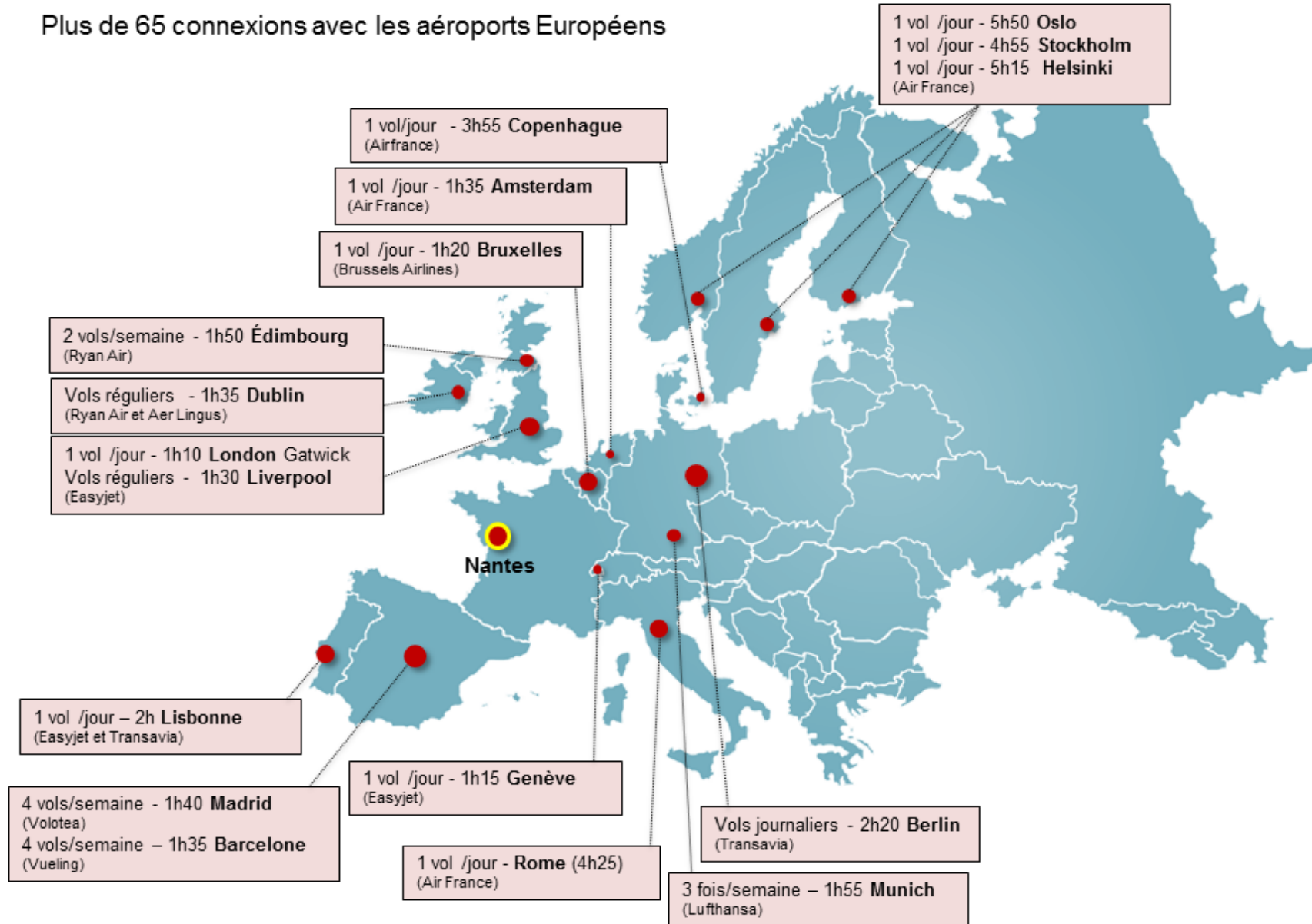


# MAIN LINKS FLIGHTS AND TRAINS TO NANTES



# MAIN LINKS EUROPEAN FLIGHTS TO NANTES

Plus de 65 connexions avec les aéroports Européens







## CONTACT

marion.ledieu@radissonblu.com

+33 2 72 00 10 10

<http://www.radissonblu.com/hotel-nantes/>